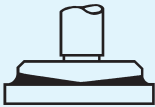




## Product Specifications

### Laboratory Data:

Shear Viscosity (DIN 51810-1)		
cone CP25 1° $\dot{\gamma} = 1000/s$	Temperature	$\eta$ (mPa·s)
 system cone-on-plate	25 °C [77 °F]	320 - 440
Viscosity-Index (ISO)		430 (base oil)
Flow Behaviour		intrinsically viscous
Viscosity-Temperature-Behaviour		excellent

<b>Color</b>	white
<b>Permanent Low Temperature</b>	-35 °C
<b>Base Oil 72 hrs fluid</b>	[-31 °F]
<b>Application Temperature</b>	-30 °C to +120 °C [-22 °F to +248 °F]
<b>Base Oil</b>	polysiloxane alcohol
<b>Viscosity Base Oil</b> 20 °C [68 °F]	250 mm <sup>2</sup> /s
<b>Thickener</b>	micro PTFE powder, no metallic soaps
<b>Wetting</b>	very good
<b>Durability</b>	very good
<b>Compatibility with Plastics</b> <b>compatible</b>	PTFE Composites, DU bearings, PA11, PA66, PBT, PC, POM, PPO, SB, TPU ABS, PA12, PA6-3T ASA, POM (CL)
<b>satisfactory</b> <b>incompatible</b>	

### Comments:

Very soft precision grease containing micro PTFE particles. High durability due to a fully synthetic base oil combined with a thickener free of metallic soaps. Excellent viscosity-temperature-behaviour. Very low static friction. Excellent wear reduction. Epilamisation is necessary, if applying large quantities of lubricant. Contains silicone, therefore please do not use with electric contacts!

P210d

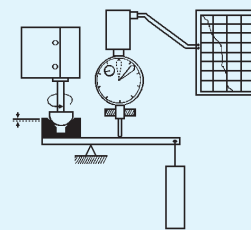
# Linear Bearing Grease

Article No. TF2861

Precision Grease with PTFE

### Tribological Data:

Test System: sphere on prism (ISO 7148/2)



friction moment M  
1/2" sphere  
prism  
normal load  $F_N$

#### Friction Behaviour

dependent on sliding speed

v (mm/s)	f	friction coefficient f			
		0.1	0.2	0.3	0.4
0	0.04				
20	0.03				
50	0.03				
200	0.04				

materials: steel/PTFE Comp., load 3 N, 25 °C [77 °F]  
lubricant: Lined Linear Bearing Grease

#### Wear Behaviour

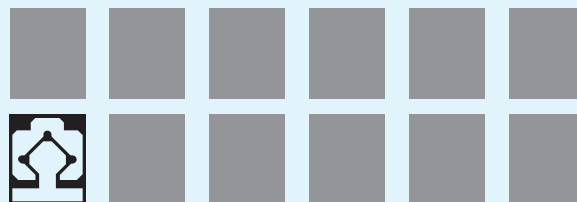
comparison: dry and lubricated with Lined Linear Bearing Grease

materials	wear (in mm)				
	0.01	0.03	0.1	0.3	1.0
St/PTFE Comp.: TF2861					
dry					
St/bronze/PTFE: TF2861					
dry					

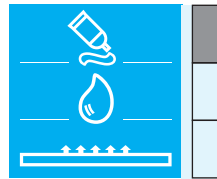
test parameters: load 30 N, distance 10 km,  
25 °C [77 °F], v=28.1 mm/s

### Application:

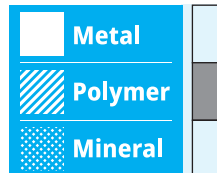
Special lubricant for highly loaded lined linear bearings out of Composite Materials, i.e. Frelon, PTFE Composites, DU bearings, etc.



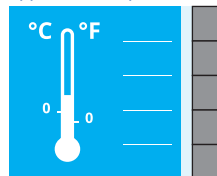
#### Product



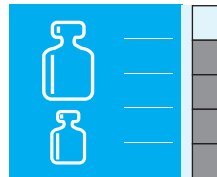
#### Bearing material



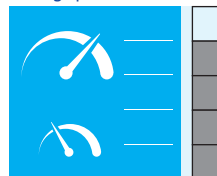
#### Application temperature



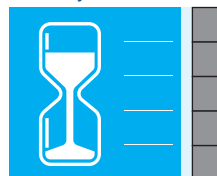
#### Bearing load



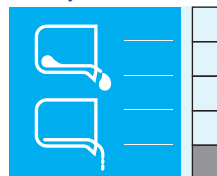
#### Sliding speed



#### Durability



#### Viscosity



#### Wetting

